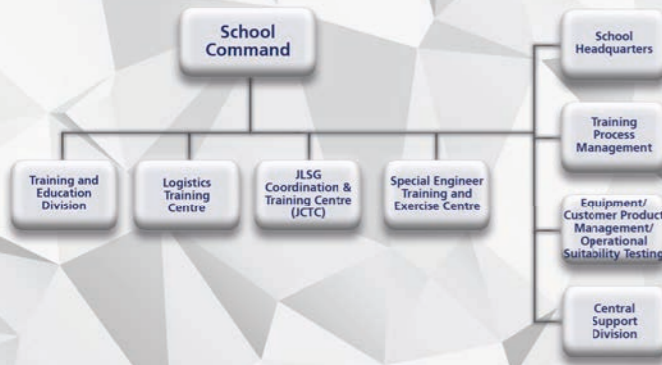


Structure and Data



The above school structure includes military and civilian personnel serving at the garrisons of Garlstedt, Plön, and Putlos. Together, they handle the following annual training volume:



~ 200

DIFFERENT TYPES OF
TRAININGS AND
COURSES~ 15.000
TRAINEES

~ 15

EXERCISE-
ROTATIONS~ 1.700
PARTICIPANTS

~ 100

MEETINGS, CONFERENCES
AND SEMINARS~ 4.500
ATTENDEES

IMPRINT

Published by:
Logistikschule der Bundeswehr
Informations-, Presse und Öffentlichkeitsarbeit

Lucius D. Clay-Kaserne
Bremerhavener Heerstr. 10
27711 Osterholz-Scharmbeck

Telephone: +49 4795 94 - 18800
E-mail: logsbwproea@bundeswehr.org

www.logistikschule.bundeswehr.de

Release date: February 2023



BUNDESWEHR

Bundeswehr Logistics School



Wir. Lehren. Logistik.
Logistikschule der Bundeswehr
Lucius D. Clay-Kaserne



BUNDESWEHR

Command and Mission



The Bundeswehr Logistics School has been under the command of Brigadier General Holger Draber since 23 February 2023. As the Commander, he is responsible for the routine duty and training operation of the Bundeswehr's largest training facility. The Logistics School's main location is Garlstedt in the District of Osterholz, Lower Saxony.

As the Bundeswehr's central logistic training facility, the Bundeswehr Logistics School's tasks are to:

- Provide basic, advanced, and follow-on training for the Bundeswehr's logistics and automotive command, specialist, and administrative personnel;
- Prepare logistic forces for operations with a focus on national and collective defence;
- Coordinate and conduct individual and collective multinational logistic command and control training courses and provide proficiency training for German and multinational personnel;
- Provide basic, advanced, and follow-on training for Bundeswehr experts, examiners, and driving instructors;
- Provide dangerous goods affairs training;
- Conduct tactical and logistic operational suitability testing of Bundeswehr land systems within the scope of the CPM Procedure for the determination and meeting of the Bundeswehr demand for products and services in the area of responsibility of the Federal Ministry of Defence;
- Conduct course-based and post-related training of the Bundeswehr special engineer forces;
- Provide training facilities and special infrastructure for the specialist training of special engineers, and for the fuel supply-related training elements for the specialist training of terminal operations and transportation forces.

Other tasks include the conduct of expert meetings, information events and seminars for agencies of the Bundeswehr and other federal and state authorities.

Training and Education Division (T&ED)

The Training and Education Division is at the heart of course-based training. It comprises the Training and Education Section with its pool of special instructors, and the Training Wings A, B, and C with a total of 14 student companies. Every year, T&ED offers a wide range of short and extended seminars and training courses, in which military and civilian personnel from organisational elements throughout the Bundeswehr and members of other nations' armed forces are provided with basic and advanced knowledge and skills in diverse fields of logistics.

Training Wing A consists of five student companies located in Garlstedt. Among other tasks, Training Wing A is responsible for the probationary officer candidate course for supply and transport personnel, and the logistics command courses for recently graduated officers, battalion commanders and agency heads.



The focus of Training Wing B is on the provision of basic and follow-on training in materiel management, the special logistic task of subsistence, and military postal service. Courses are open to all Bundeswehr services, and trainees are organized in four student companies in Garlstedt, and one student company in Plön.

Training Wing C has four student companies in Garlstedt. One of its main tasks is the provision of basic, advanced and follow-on training for automotive command, specialist, and administrative personnel employed in the Bundeswehr's motor vehicle affairs sector. Training Wing C is also the central provider of training on dangerous goods, cargo securing, recovery training involving protected wheeled vehicles and armoured recovery vehicles, and also multiplier training with ground conveyors, materiel handling equipment, and heavy equipment transporters.



Logistics Training Centre (LTC)

Established in 2006, the Logistics Training Centre is to provide specialist deployment training for the German contingents' logistics personnel, and to conduct field training exercises as a part of the proficiency training of battalion-size logistic units. True to the aim of preparing the Bundeswehr's logistics personnel as good as possible for their specialist work during deployment, trainees undergo practical action training that is very close to operational reality. Accordingly, the Logistics Training Centre needs to continuously adapt and evolve in order to keep up with the ever-changing operational requirements.



The Logistics Training Centre is the Bundeswehr's only logistic training facility that offers battalion-size units a modern training environment reflecting today's operational scenarios. New ideas are generated that are beneficial for the overall deployment training.



Log**ö**bZ

Wir. Trainieren. Einsatz.

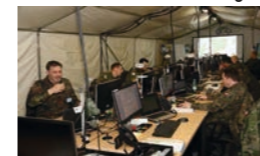
The performance data of the state-of-the-art infrastructure and training technology enable logistic deployment forces and logistic unit headquarters to train under almost real-life logistic conditions.

Joint Logistic Support Group Coordination and Training Centre (JCTC)

As a result of the implementation of the NATO members' Framework Nation Concept (FNC), the Joint Logistic Support Group Coordination and Training Centre (JCTC) was established in 2017. In October 2019, the JCTC was appointed as Germany's national centre of excellence for multinational logistic leadership training at the operational and tactical levels. The JCTC staff members are qualified for deployment in an international environment and form an augmentation pool for a JLSG HQ Core Staff Element.



In addition to the multinational personnel pool, the JCTC Personnel Section coordinates the cross-organisational pool of German JLSG personnel earmarked for multinational logistic command and control billets, registers them for multinational individual and collective training courses organised by the Training and Exercise Section, and arranges for proficiency training.



The HQ Support Element provides a mobile command post with state-of-the-art command, control, and information systems to enable multinational units to practice logistic support service procedures and workflows in a mission-oriented



training environment. All required basic and proficiency training procedures have been designed and developed in close coordination with the competent agencies of the NATO/EU member states and partner nations. The Concept and Doctrine Section prepares and revises documents on multinational logistic command and control as directed by and following the guidelines of the Bundeswehr Logistics Command.



Special Engineer Training and Exercise Centre (SETEC)

The Special Engineer Training and Exercise Centre has evolved from its predecessor, the Pipeline Engineer Training Centre in Putlos (Oldenburg in Holstein), and was placed under the command of the Bundeswehr Logistics School as an autonomous agency on 1 October 2006.



Its primary task is to conduct course-based specialist training for Bundeswehr special engineer officers, non-commissioned officers, and enlisted personnel at the training locations Putlos and Garlstedt. The Special Engineer Training and Exercise Centre in Putlos also provides proficiency training for troops who are tasked with the construction and/or ensuring the smooth operation of camps and bulk fuel installations on operations.



In the SETEC, course participants are trained on the same major engineer equipment types that are used in theatre.

The centre provides both collective and individual training. Advanced training courses and familiarization courses introducing specialists to new equipment are offered in the fields of air-conditioning engineering, auxiliary power units, electrical engineering, mechanical engineering, and POL.



The special infrastructure pipeline training facility is the only of its kind in Europe filled with real fuels, which allows the trainees to apply and practice their skills under live conditions. Training is conducted on modular bulk fuel installations with capacities ranging from 150 m³ to 1,200 m³, sections of static pipeline systems, and the associated mobile back-up systems.