

IMPRINT

Published by:
Press and Information
Centre of the
Bundeswehr Joint
Force Command



Julius-Leber-Kaserne
Kurt-Schumacher-Damm 41
13405 Berlin

Henning-von-Tresckow-Kaserne
Werderscher Damm 21-29
14548 Schwielowsee
OT Geltow

Phone:
+49 30 4981-4555
E-mail:
OpFueKdoBwPIZ@bundeswehr.org
Internet:
www.bundeswehr.de

Photographs: Bundeswehr
Printed by: BAIUDBw DL I 4,
Zentraldruckerei BAIUDBw

As of: May 2025

ATTENTION CONVOY!

Correct procedure when encountering
a military convoy



BUNDESWEHR



BUNDESWEHR

HOW TO DEAL WITH A CONVOY

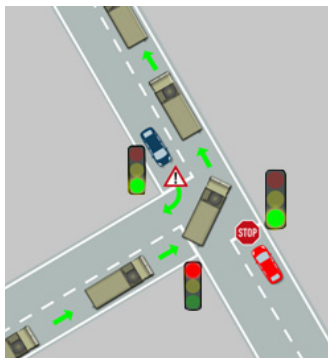
Located in the heart of Europe, Germany plays an important role in deploying allied military units to NATO's external borders. Germany then serves as a logistics hub and is responsible for coordinated deployments and support. Both allied armed forces and German armed forces conduct nationwide exercises. As a result, citizens will increasingly see military vehicles driving on the roads. March columns of foreign armed forces always require special attention. It must be assumed that they are not fully familiar with German road traffic regulations.

How do I recognise a convoy?

All vehicles except the last in the convoy have a blue flag on the driver's side. The last vehicle has a green flag and may also be equipped with a yellow flashing light or a warning sign.

Which rights does a formation like this have?

Under German traffic law, a convoy of vehicles is considered to be one vehicle. A closed formation may therefore continue driving through traffic lights which have turned red, provided the first vehicle has passed the green light. The following also applies in roundabouts, at zebra crossings and intersections or when using the zipper method: the column must always stay together. This also means that interrupting the column by "squeezing in" is not permitted.

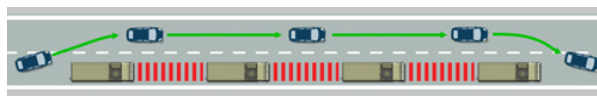


Is there a limit to the length of convoys?

The German Road Traffic Regulations (StVO) do not prescribe a specific limit. However, it is required that adequately spaced gaps are left free for remaining traffic. For example, emergency medical and relief services moving with more than 15 vehicles constitute an additional, separate convoy.

Am I allowed to overtake a convoy?

Yes, although generally a convoy should only be overtaken as a whole. However, this is nearly impossible except on the autobahn or multi-lane carriageways.



Which rules apply for autobahn access and exit lanes?

Strictly speaking, merging into the convoy in these areas is also prohibited. If there is a minimum distance of 100 metres between the individual vehicles, you may join the autobahn quickly and then leave the convoy again at the next opportunity.

